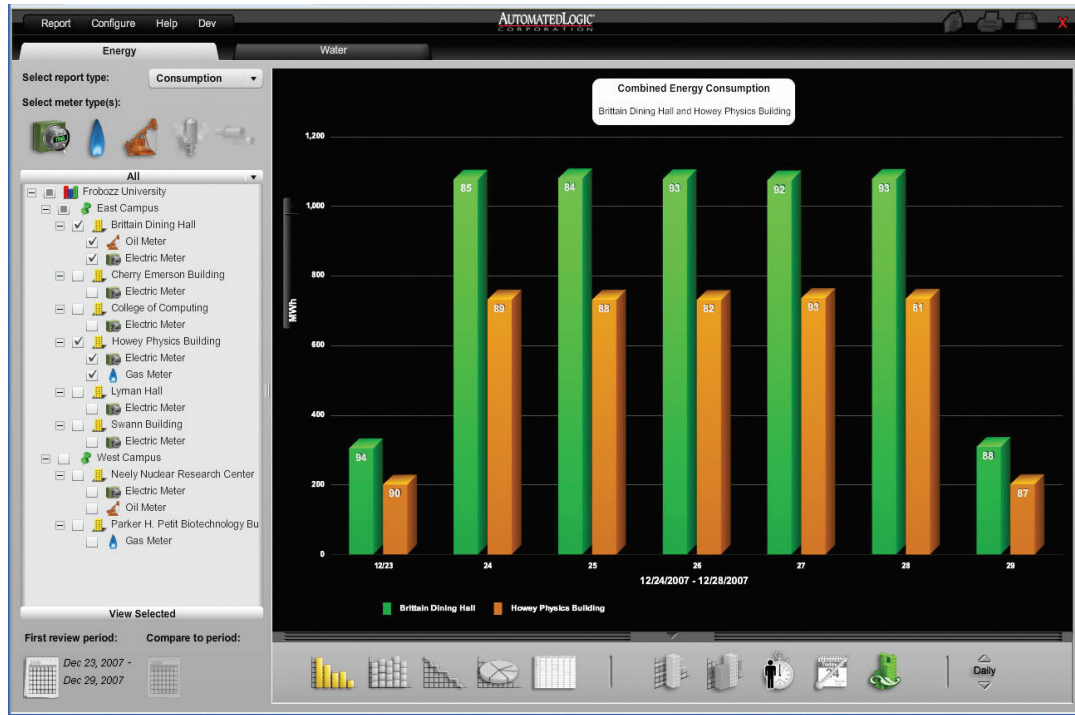


# WebCTRL® EnergyReports™

## A Tool for Sustainable Building Operations



Facility and energy managers now have a powerful tool in their arsenal to minimize energy consumption, maximize comfort, and achieve sustainable building operations.

Automated Logic's new EnergyReports application is an incredibly flexible and easy-to-use reporting tool that uses WebCTRL's extensive trending capabilities for metering energy consumption and our Environmental Index™ for measuring comfort.

### Key Features and Benefits

- Animated energy consumption or demand reports available in 3D bar, line, pie chart, or tabular data
- Easy and convenient access using multiple Internet browsers
- Attractive and intuitive user interface with system tree display designed for simplicity of use
- Energy consumption can be normalized by area or converted to other engineering units (ex. CO<sub>2</sub>)
- Includes occupied/unoccupied usage, Cooling Degree Days (CDD) and Heating Degree Days (HDD), low-median-high data, and benchmark data for comparison
- Integrates Environmental Index into energy reports, enabling you to intelligently compare efficiency with comfort
  - Adobe Acrobat and Microsoft Excel reports generated on both client and server archive
  - JAVA application compatible with WebCTRL v4 or later on multiple operating systems
  - Easily installs on existing WebCTRL server – no additional server or integration with third-party software required
  - Integrated Report Manager for scheduling reports on a monthly, quarterly or yearly basis

**AUTOMATEDLOGIC®**  
CORPORATION

1150 Roberts Boulevard  
Kennesaw, Georgia 30144  
770/429-3000  
Fax 770/429-3001  
www.automatedlogic.com

CSWCERrev3

# WebCTRL® EnergyReports™

## A Tool for Sustainable Building Operations

EnergyReports is a JAVA application that runs concurrently with WebCTRL, offering access to key environmental reports through Internet Explorer or Firefox browsers. All consumption and demand data for electricity, gas, oil, steam, or chilled water is stored in a dedicated industry standard database. Metered energy sources are easily configured and assigned to building or area levels in the EnergyReports user tree. Designed for use in single- or multiple-building campuses, EnergyReports plugs directly into existing WebCTRL systems with minimal setup, and it is ideal for WebCTRL retrofit or new construction projects.

EnergyReports enables users to compare energy consumption or demand over different periods with drop-down menus or to create custom periods using the calendar control. Dynamic and animated three-dimensional color graphs are quickly rendered in bar, line, pie, or tabular data format. A single mouse click enables the user to normalize consumption data, convert to cost in terms of currency or carbon dioxide emissions or change engineering units on the fly! Energy consumption can be benchmarked and compared to validated data or to similar buildings in your area using a simple animated toolbar. Similarly, occupied vs. unoccupied building energy usage can be differentiated visually. Cooling Degree Days and/or Heating Degree Days are calculated automatically and displayed graphically over the review period with a single mouse click.

Soaring energy prices and a growing environmental consciousness have renewed everyone's focus on minimizing building energy consumption and maximizing energy efficiency. Facility managers know too well that sacrificing human comfort costs even more in terms of lost productivity and revenue. Our Environmental Index provides a simple and effective solution for measuring comfort in a building or space because energy efficiency must be balanced with comfort.

EnergyReports can display energy consumption with the Environmental Index, enabling a direct comparison of energy efficiency to comfort. Achieving sustainable building operation becomes much easier with EnergyReports.

And to make operations even easier, EnergyReports includes a Report Manager so that recurring monthly, quarterly or yearly reports can be scheduled and automatically sent to designated personnel via email in Adobe PDF and/or Microsoft Excel format. Archived reports can be custom labeled, sorted by author and easily retrieved using the integrated Report Manager.

### Application Information:

---

WebCTRL v4 or later with Java API update required with Enterprise license

---

EnergyReports Java applications run concurrently with WebCTRL

---

Databases supported: MySQL 5.0, PostgreSQL 7.4, Oracle 10g or SQL Server 2005 or later version

---

Browsers supported: Internet Explorer 7.x or Firefox 3.05. Access via WebCTRL user name/password

---

